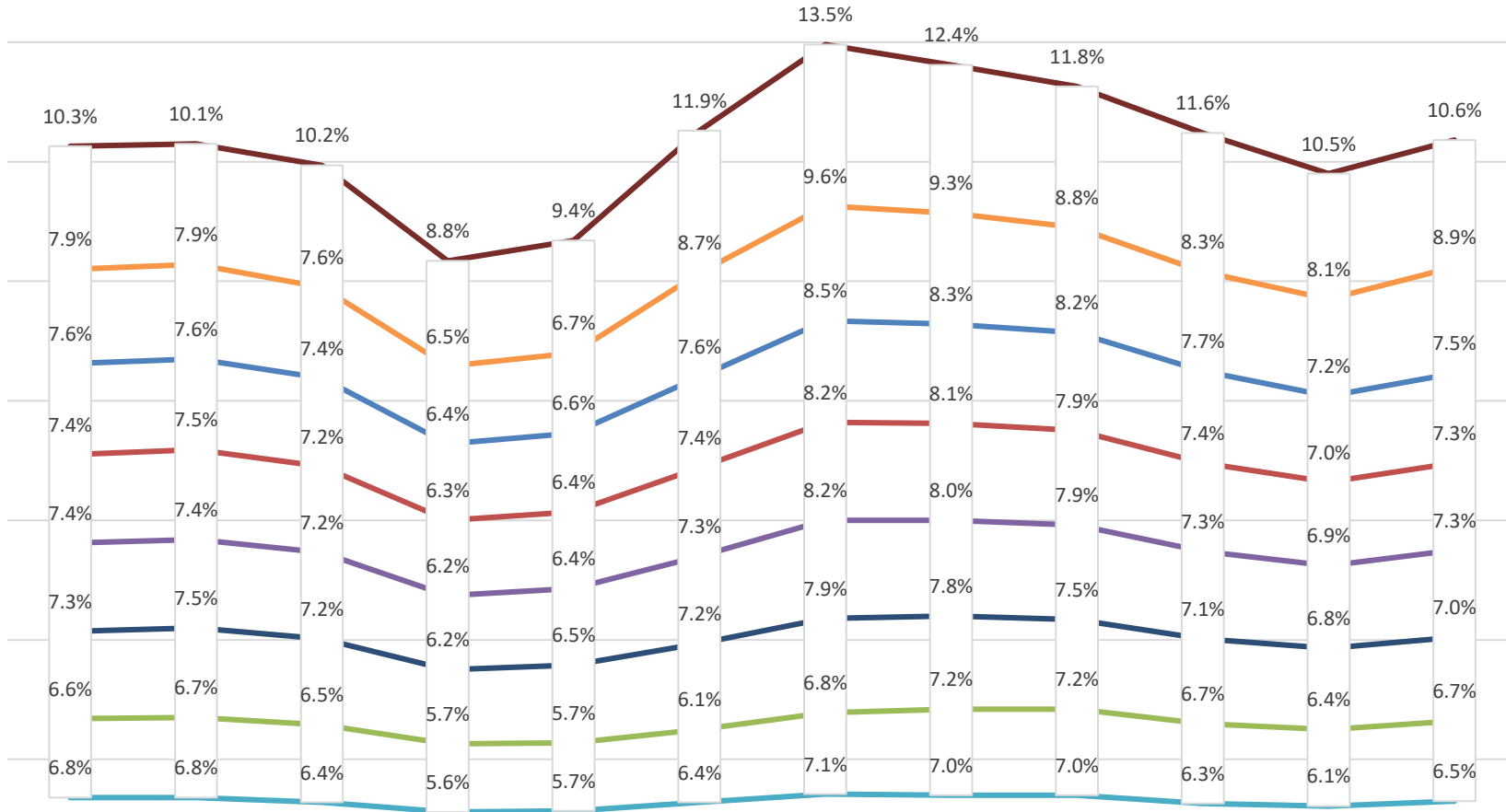


## Southeast Texas Historical Unemployment Trends Latest 12 Monthly Trend



	July. 2016	Aug. 2016	Sep. 2016	Oct. 2016	Nov. 2016	Dec. 2016	Jan. 2017	Feb. 2017	Mar-17	Apr-17	May-17	Jun-17
Port Arthur City	10.3%	10.1%	10.2%	8.8%	9.4%	11.9%	13.5%	12.4%	11.8%	11.6%	10.5%	10.6%
Newton County	7.9%	7.9%	7.6%	6.5%	6.7%	8.7%	9.6%	9.3%	8.8%	8.3%	8.1%	8.9%
Jefferson County	7.6%	7.6%	7.4%	6.4%	6.6%	7.6%	8.5%	8.3%	8.2%	7.7%	7.2%	7.5%
Beaumont-Port Arthur MSA	7.4%	7.5%	7.2%	6.3%	6.4%	7.4%	8.2%	8.1%	7.9%	7.4%	7.0%	7.3%
South East Texas WDA	7.4%	7.4%	7.2%	6.2%	6.4%	7.3%	8.2%	8.0%	7.9%	7.3%	6.9%	7.3%
Orange County	7.3%	7.5%	7.2%	6.2%	6.5%	7.2%	7.9%	7.8%	7.5%	7.1%	6.8%	7.0%
Beaumont City	6.6%	6.7%	6.5%	5.7%	5.7%	6.1%	6.8%	7.2%	7.2%	6.7%	6.4%	6.7%
Hardin County	6.8%	6.8%	6.4%	5.6%	5.7%	6.4%	7.1%	7.0%	7.0%	6.3%	6.1%	6.5%