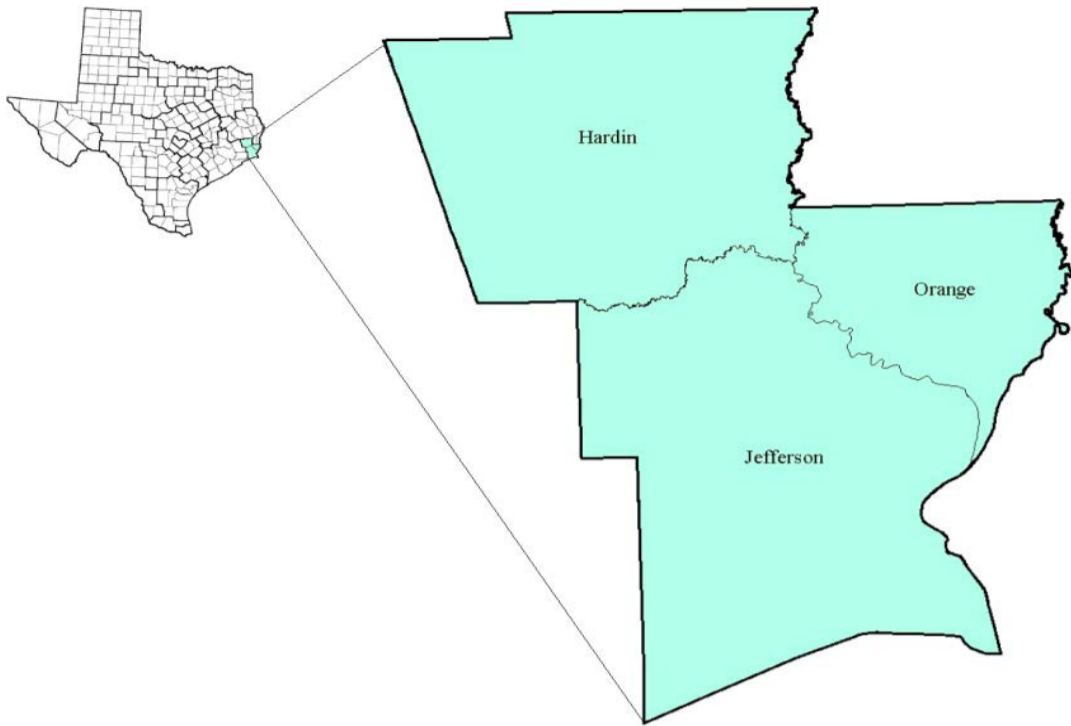


South East Texas Workforce Development Area

June 2017



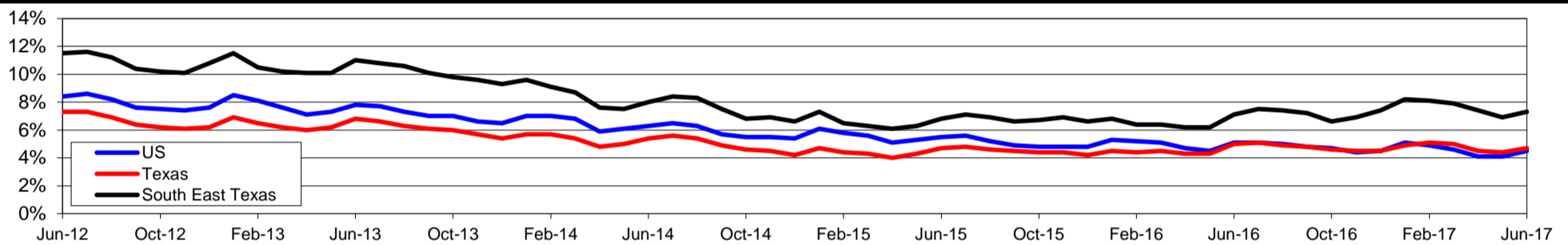
WDA Labor Force Statistics				
	Jun-17	May-17	Jun-16	OTY
CLF	167,815	167,546	169,221	-1,406
Employed	155,636	155,918	157,207	-1,571
Unemployed	12,179	11,628	12,014	165
Rate	7.3%	6.9%	7.1%	0.2%

Texas Labor Force Statistics				
	Jun-17	May-17	Jun-16	OTY
CLF	13,464,322	13,450,012	13,319,665	144,657
Employed	12,833,254	12,858,020	12,656,717	176,537
Unemployed	631,068	591,992	662,948	-31,880
Rate	4.7%	4.4%	5.0%	-0.3%

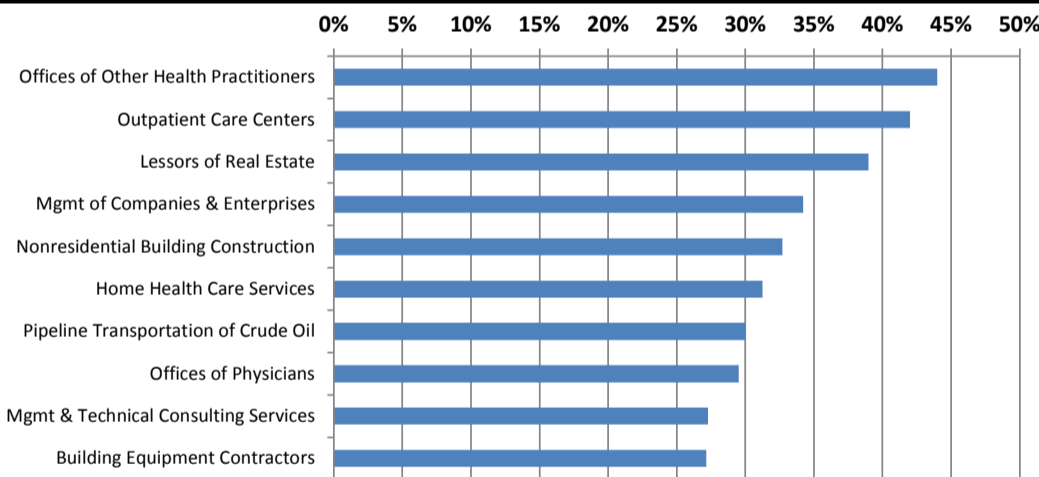
US Labor Force Statistics				
	Jun-17	May-17	Jun-16	OTY
CLF	161,337,000	159,979,000	160,135,000	1,202,000
Employed	154,086,000	153,407,000	151,990,000	2,096,000
Unemployed	7,250,000	6,572,000	8,144,000	-894,000
Rate	4.5%	4.1%	5.1%	-0.6%

Continued Claims for the Week of the 12th				
	Jun-17	May-17	Jun-16	OTY
WDA	2,952	2,767	3,125	-173
Texas	123,045	113,603	157,420	-34,375

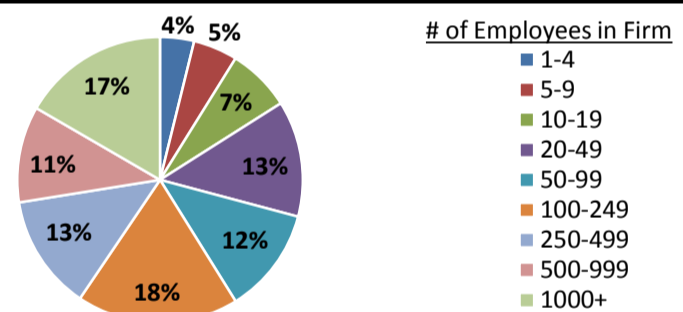
Historical Unemployment Rates



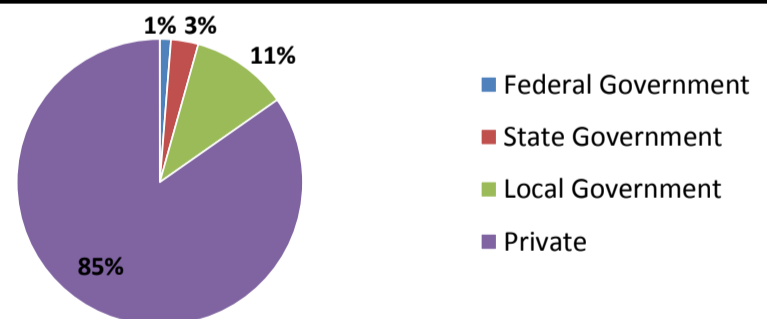
Projected Fastest Growing Industries in WDA (% growth 2014-2024)



Employment by Size Class (4th Quarter 2016)



Employment by Ownership (4th Quarter 2016)



Average Weekly Wage (4th Quarter 2016)

	Q4 2016	Q3 2016	Q4 2015	Change	
				Quarter	Year
WDA	\$1,042	\$1,023	\$1,076	\$19	-\$34
Texas	\$1,072	\$1,042	\$1,099	\$31	-\$27
US	\$1,067	\$1,027	\$1,083	\$40	-\$16

Employment by Industry (4th Quarter 2016, Percent Change)

Industry	Employment	% of total	% Change	
			Quarter	Year
Natural resources and mining	1,266	0.8%	3.4%	4.5%
Construction	16,896	10.8%	-2.7%	-0.6%
Manufacturing	21,203	13.5%	-0.6%	-6.0%
Trade, transportation and utilities	32,630	20.8%	0.6%	-2.4%
Information	1,307	0.8%	-1.3%	-12.9%
Financial activities	5,576	3.5%	0.0%	-5.8%
Professional and business services	13,752	8.8%	-2.2%	-4.2%
Education and health services	36,143	23.0%	4.0%	1.0%
Leisure and hospitality	15,732	10.0%	-1.9%	0.9%
Other services	5,083	3.2%	0.6%	7.5%
Public administration	7,486	4.8%	0.8%	1.9%
Total	157,074	100.0%	0.3%	-1.5%

Employment by Industry (4th Quarter 2016)

