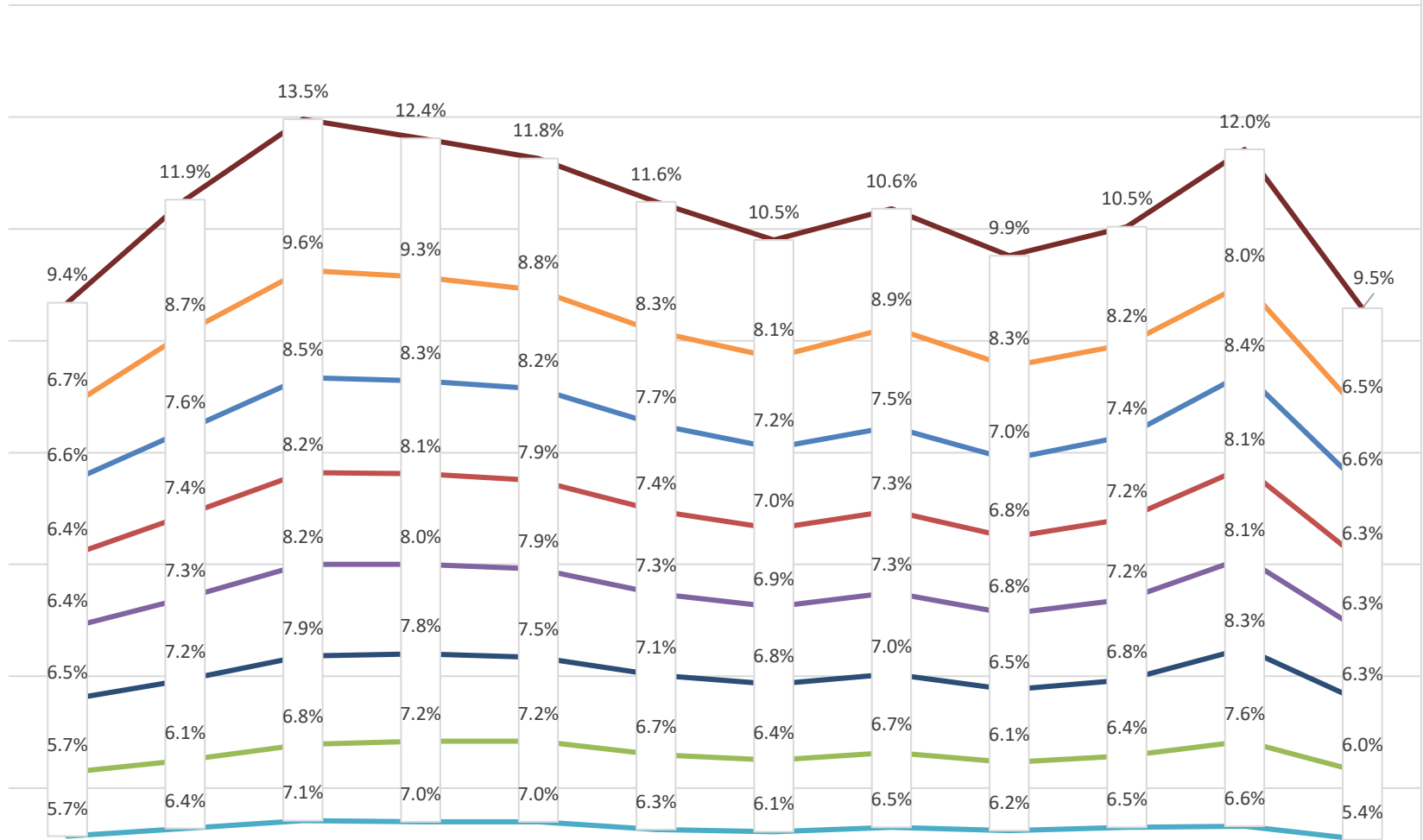


## Southeast Texas Historical Unemployment Trends Latest 12 Monthly Trend



	Nov. 2016	Dec. 2016	Jan. 2017	Feb. 2017	Mar-17	Apr-17	May-17	Jun-17	Jul-17	Aug-17	Sep-17	Oct-17
Port Arthur City	9.4%	11.9%	13.5%	12.4%	11.8%	11.6%	10.5%	10.6%	9.9%	10.5%	12.0%	9.5%
Newton County	6.7%	8.7%	9.6%	9.3%	8.8%	8.3%	8.1%	8.9%	8.3%	8.2%	8.0%	6.5%
Jefferson County	6.6%	7.6%	8.5%	8.3%	8.2%	7.7%	7.2%	7.5%	7.0%	7.4%	8.4%	6.6%
Beaumont-Port Arthur MSA	6.4%	7.4%	8.2%	8.1%	7.9%	7.4%	7.0%	7.3%	6.8%	7.2%	8.1%	6.3%
South East Texas WDA	6.4%	7.3%	8.2%	8.0%	7.9%	7.3%	6.9%	7.3%	6.8%	7.2%	8.1%	6.3%
Orange County	6.5%	7.2%	7.9%	7.8%	7.5%	7.1%	6.8%	7.0%	6.5%	6.8%	8.3%	6.3%
Beaumont City	5.7%	6.1%	6.8%	7.2%	7.2%	6.7%	6.4%	6.7%	6.1%	6.4%	7.6%	6.0%
Hardin County	5.7%	6.4%	7.1%	7.0%	7.0%	6.3%	6.1%	6.5%	6.2%	6.5%	6.6%	5.4%