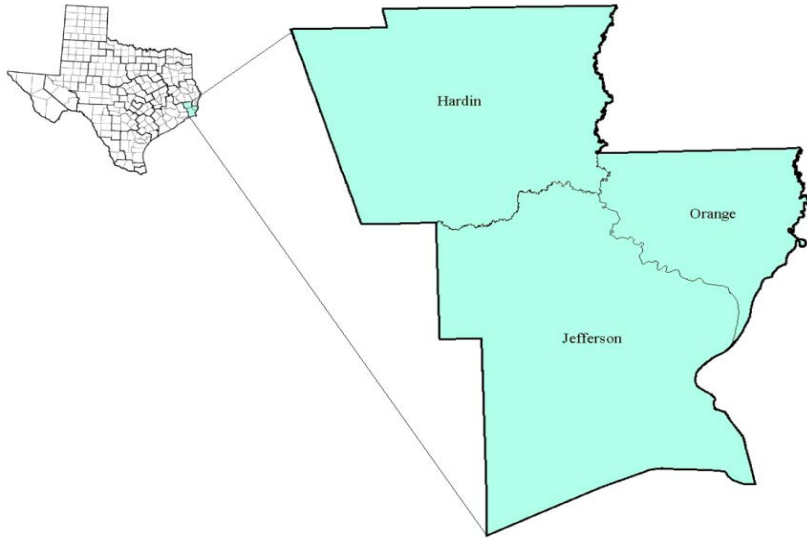


South East Texas Workforce Development Area

December 2017



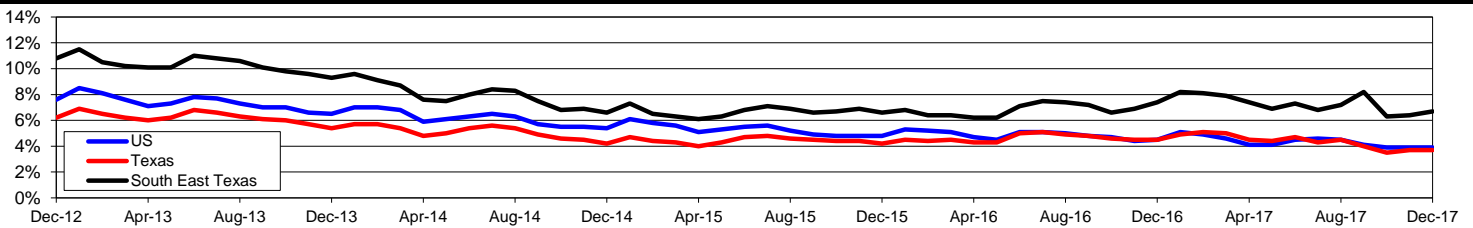
WDA Labor Force Statistics				
	Dec-17	Nov-17	Dec-16	OTY
CLF	167,544	166,892	168,429	-885
Employed	156,334	156,129	155,919	415
Unemployed	11,210	10,763	12,510	-1,300
Rate	6.7%	6.4%	7.4%	-0.7%

Texas Labor Force Statistics				
	Dec-17	Nov-17	Dec-16	OTY
CLF	13,545,282	13,500,872	13,353,321	191,961
Employed	13,043,959	13,001,592	12,747,329	296,630
Unemployed	501,323	499,280	605,992	-104,669
Rate	3.7%	3.7%	4.5%	-0.8%

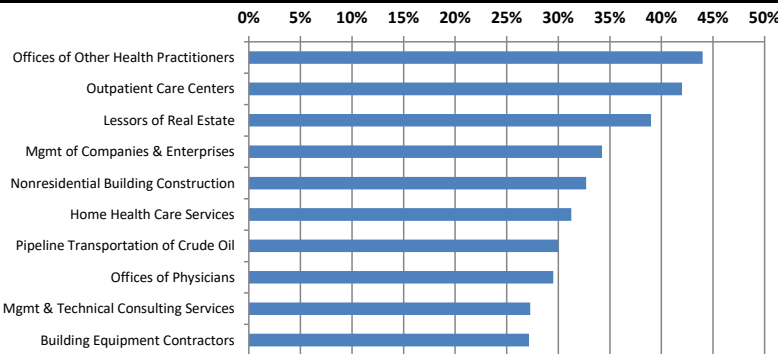
US Labor Force Statistics				
	Dec-17	Nov-17	Dec-16	OTY
CLF	159,880,000	160,466,000	158,968,000	912,000
Employed	153,602,000	154,180,000	151,798,000	1,804,000
Unemployed	6,278,000	6,286,000	7,170,000	-892,000
Rate	3.9%	3.9%	4.5%	-0.6%

Continued Claims for the Week of the 12th				
	Dec-17	Nov-17	Dec-16	OTY
WDA	3,524	3,403	3,724	-200
Texas	108,432	105,083	129,904	-21,472

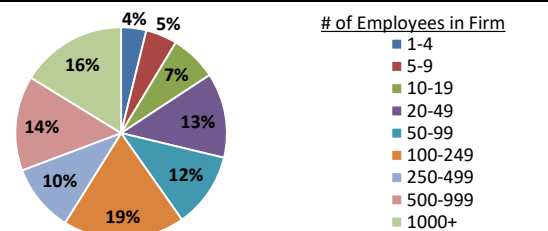
Historical Unemployment Rates



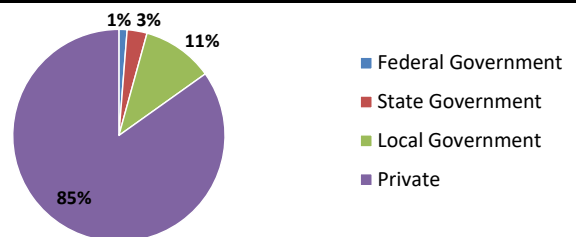
Projected Fastest Growing Industries in WDA (% growth 2014-2024)



Employment by Size Class (2nd Quarter 2017)



Employment by Ownership (2nd Quarter 2017)



Average Weekly Wage (2nd Quarter 2017)

	Q2 2017	Q1 2017	Q2 2016	Change	
				Quarter	Year
WDA	\$999	\$1,091	\$993	-\$92	\$6
Texas	\$1,026	\$1,124	\$1,000	-\$99	\$25
US	N/A	\$1,111	\$988	N/A	N/A

Employment by Industry (2nd Quarter 2017, Percent Change)

Industry	Employment	% of total	% Change	
			Quarter	Year
Natural resources and mining	1,112	0.7%	-0.4%	-13.4%
Construction	17,861	11.3%	2.5%	2.6%
Manufacturing	21,549	13.7%	0.4%	0.3%
Trade, transportation and utilities	31,925	20.2%	-1.2%	-1.7%
Information	1,262	0.8%	-1.3%	-5.9%
Financial activities	5,707	3.6%	0.0%	2.1%
Professional and business services	14,269	9.0%	-0.3%	-0.3%
Education and health services	35,221	22.3%	0.0%	-1.7%
Leisure and hospitality	16,458	10.4%	4.9%	2.4%
Other services	4,938	3.1%	-6.2%	-4.7%
Public administration	7,414	4.7%	0.5%	0.2%
Total	157,716	100.0%	0.4%	-0.4%

Employment by Industry (2nd Quarter 2017)

