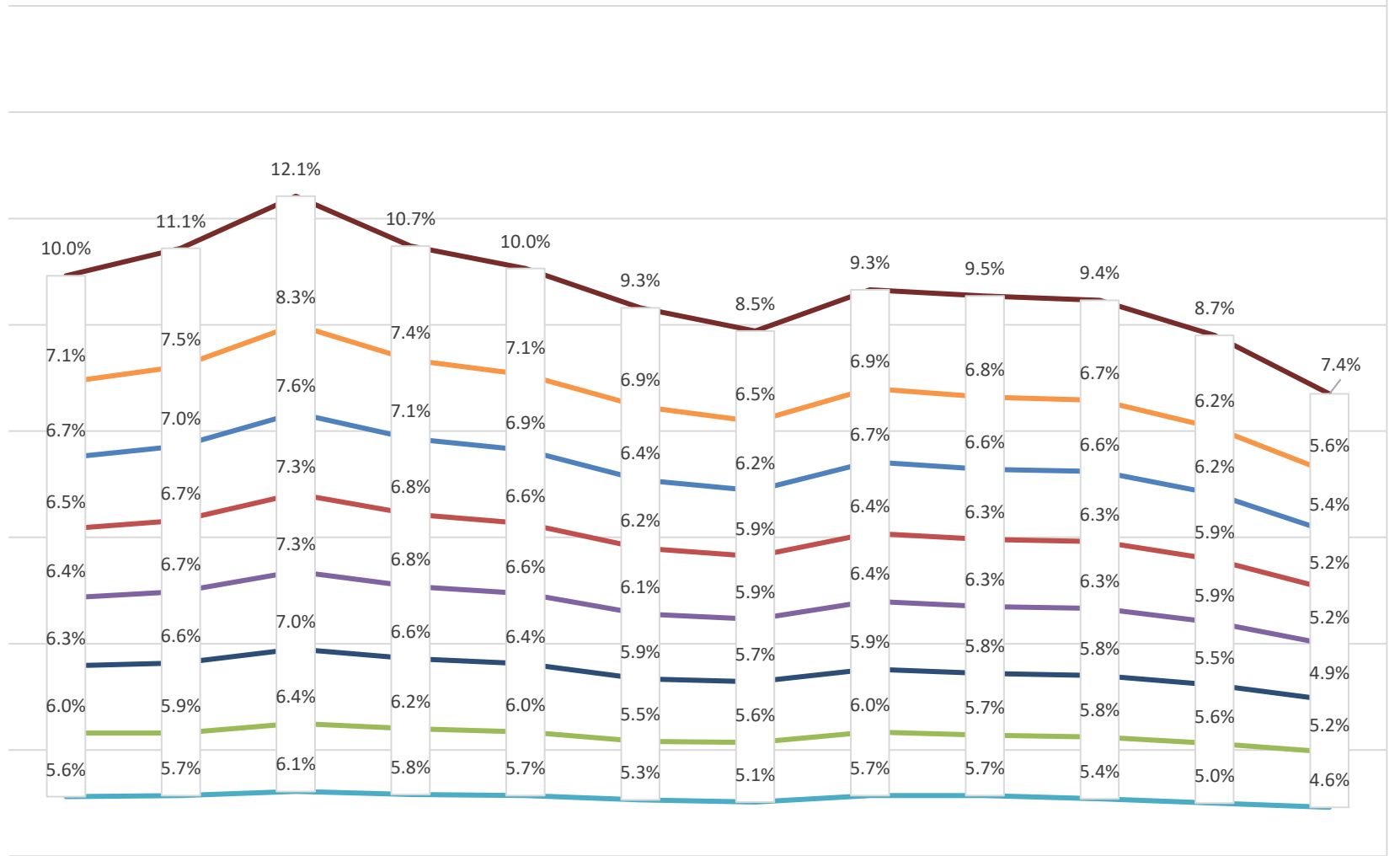


## Southeast Texas Historical Unemployment Trends Latest 12 Monthly Trend



	Nov-17	Dec-17	Jan-18	Feb-18	Mar-18	Apr-18	May-18	Jun-18	Jul-18	Aug-18	Sep-18	Oct-18
Port Arthur City	10.0%	11.1%	12.1%	10.7%	10.0%	9.3%	8.5%	9.3%	9.5%	9.4%	8.7%	7.4%
Newton County	7.1%	7.5%	8.3%	7.4%	7.1%	6.9%	6.5%	6.9%	6.8%	6.7%	6.2%	5.6%
Jefferson County	6.7%	7.0%	7.6%	7.1%	6.9%	6.4%	6.2%	6.7%	6.6%	6.6%	6.2%	5.4%
Beaumont-Port Arthur MSA	6.5%	6.7%	7.3%	6.8%	6.6%	6.2%	5.9%	6.4%	6.3%	6.3%	5.9%	5.2%
South East Texas WDA	6.4%	6.7%	7.3%	6.8%	6.6%	6.1%	5.9%	6.4%	6.3%	6.3%	5.9%	5.2%
Orange County	6.3%	6.6%	7.0%	6.6%	6.4%	5.9%	5.7%	5.9%	5.8%	5.8%	5.5%	4.9%
Beaumont City	6.0%	5.9%	6.4%	6.2%	6.0%	5.5%	5.6%	6.0%	5.7%	5.8%	5.6%	5.2%
Hardin County	5.6%	5.7%	6.1%	5.8%	5.7%	5.3%	5.1%	5.7%	5.7%	5.4%	5.0%	4.6%