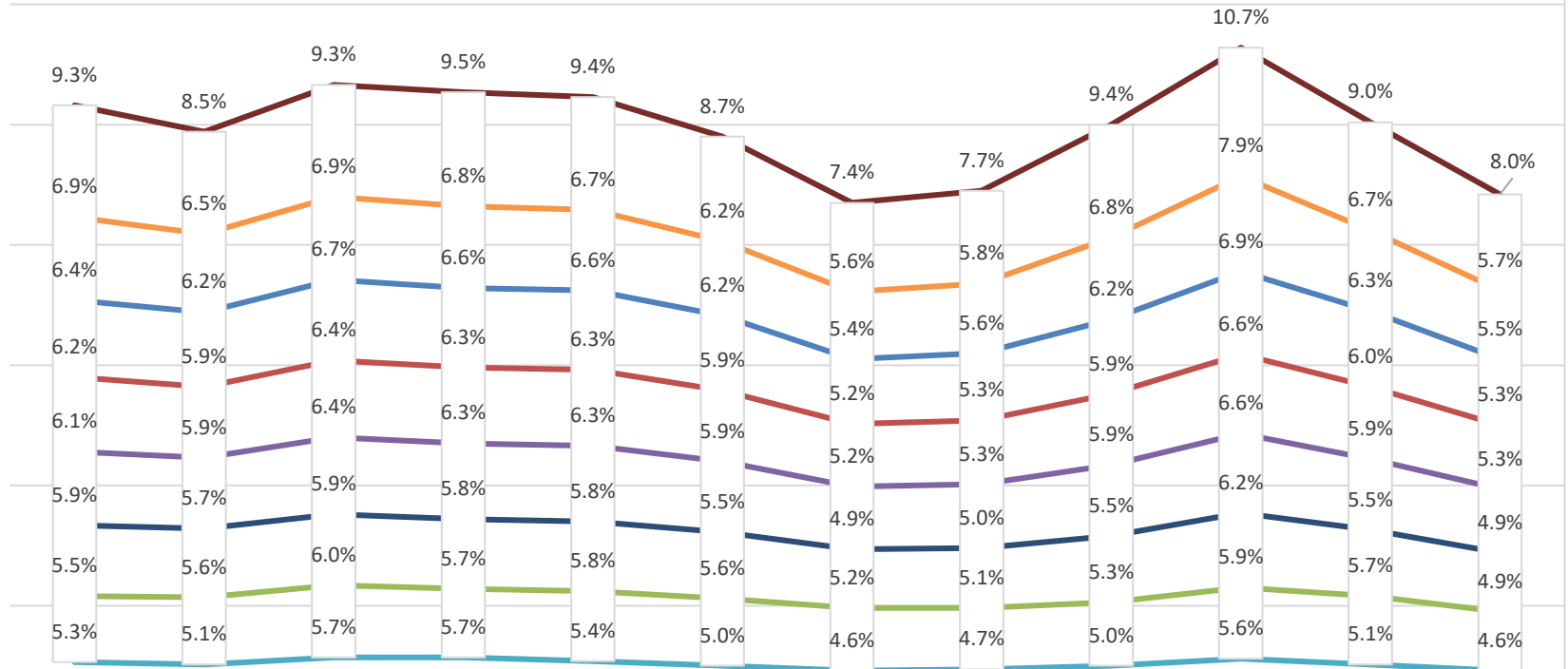


Southeast Texas Historical Unemployment Trends Latest 12 Monthly Trend



	Apr-18	May-18	Jun-18	Jul-18	Aug-18	Sep-18	Oct-18	Nov-18	Dec-18	Jan-19	Feb-19	Mar-19
Port Arthur City	9.3%	8.5%	9.3%	9.5%	9.4%	8.7%	7.4%	7.7%	9.4%	10.7%	9.0%	8.0%
Newton County	6.9%	6.5%	6.9%	6.8%	6.7%	6.2%	5.6%	5.8%	6.8%	7.9%	6.7%	5.7%
Jefferson County	6.4%	6.2%	6.7%	6.6%	6.6%	6.2%	5.4%	5.6%	6.2%	6.9%	6.3%	5.5%
Beaumont-Port Arthur MSA	6.2%	5.9%	6.4%	6.3%	6.3%	5.9%	5.2%	5.3%	5.9%	6.6%	6.0%	5.3%
South East Texas WDA	6.1%	5.9%	6.4%	6.3%	6.3%	5.9%	5.2%	5.3%	5.9%	6.6%	5.9%	5.3%
Orange County	5.9%	5.7%	5.9%	5.8%	5.8%	5.5%	4.9%	5.0%	5.5%	6.2%	5.5%	4.9%
Beaumont City	5.5%	5.6%	6.0%	5.7%	5.8%	5.6%	5.2%	5.1%	5.3%	5.9%	5.7%	4.9%
Hardin County	5.3%	5.1%	5.7%	5.7%	5.4%	5.0%	4.6%	4.7%	5.0%	5.6%	5.1%	4.6%