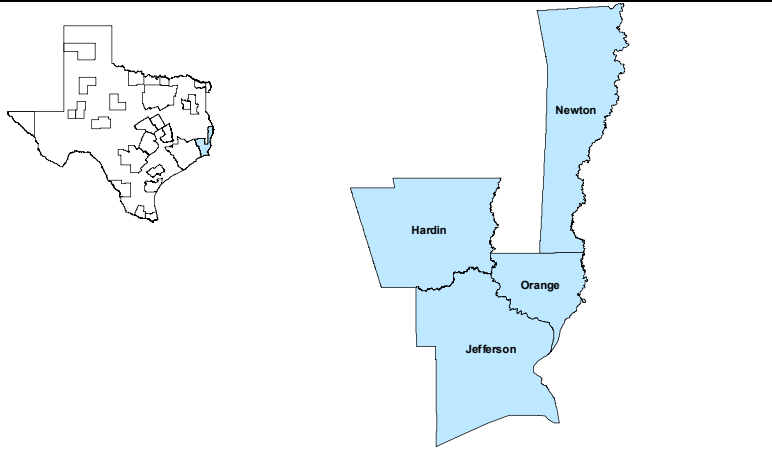


## Beaumont-Port Arthur MSA

March 2019



MSA Labor Force Statistics				
	Mar-19	Feb-19	Mar-18	Yearly Change
Civilian Labor Force	177,150	178,580	175,983	1,167
Employed	167,814	167,975	164,572	3,242
Unemployed	9,336	10,605	11,411	-2,075
Unemployment Rate	5.3%	5.9%	6.5%	-1.2%

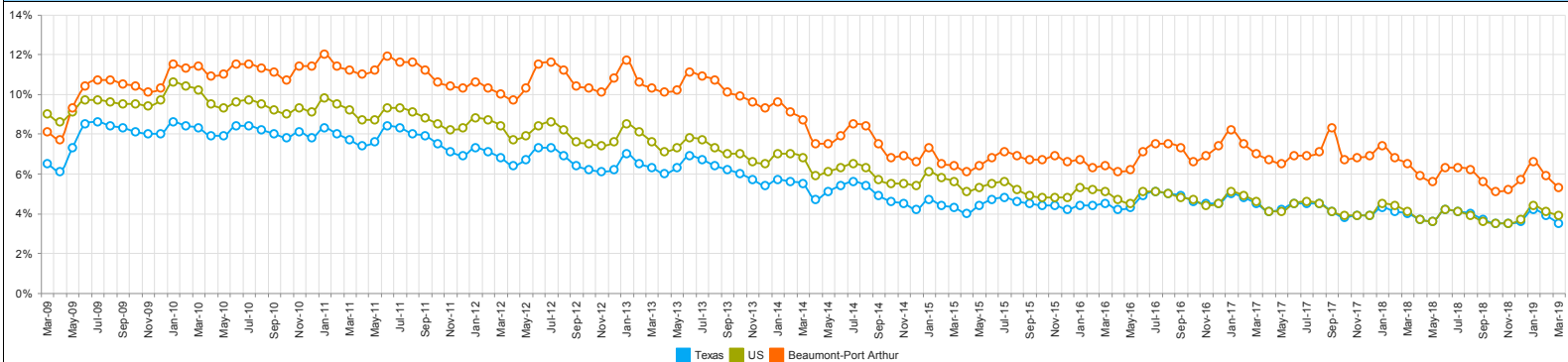
  

Texas Labor Force Statistics				
	Mar-19	Feb-19	Mar-18	Yearly Change
Civilian Labor Force	14,059,553	14,086,922	13,818,674	240,879
Employed	13,564,857	13,537,993	13,262,592	302,265
Unemployed	494,696	548,929	556,082	-61,386
Unemployment Rate	3.5%	3.9%	4.0%	-0.5%

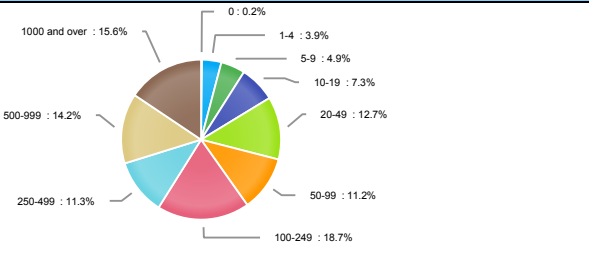
  

US Labor Force Statistics				
	Mar-19	Feb-19	Mar-18	Yearly Change
Civilian Labor Force	162,823,000	162,793,000	161,548,000	1,275,000
Employed	156,441,000	156,167,000	154,877,000	1,564,000
Unemployed	6,382,000	6,625,000	6,671,000	-289,000
Unemployment Rate	3.9%	4.1%	4.1%	-0.2%

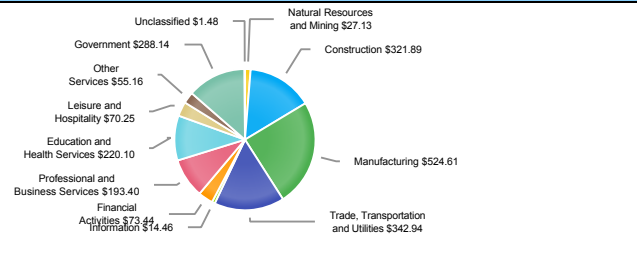
### Historical Unemployment Rates



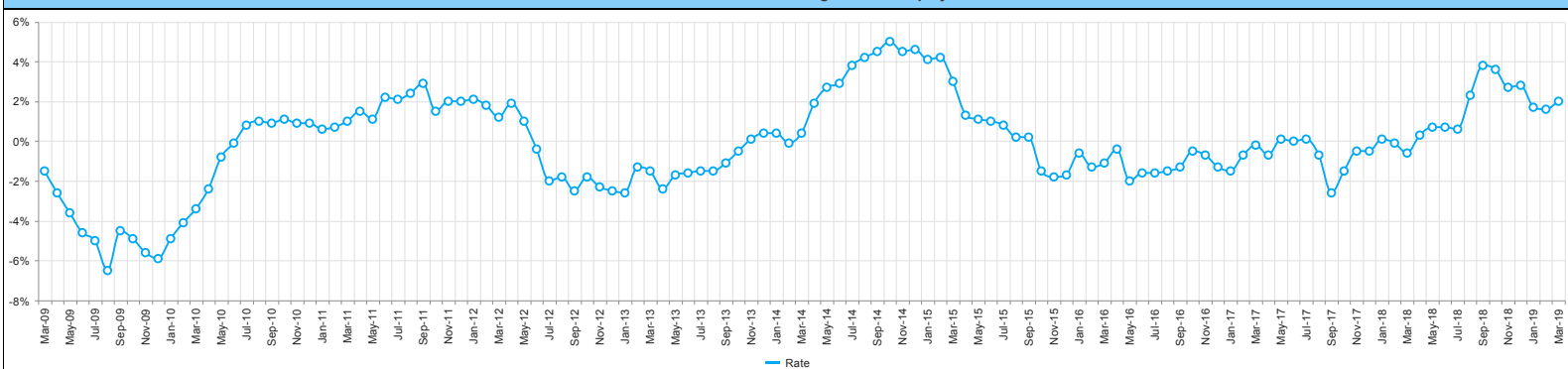
### Employment by Size Class (3rd Quarter 2018)



### Wages by Industry (in millions) (3rd Quarter 2018)



### Annual Growth Rate Total Non-agricultural employment



### Employment by Industry (March 2019)

Industry	Current Month Employment	% Monthly Change	% Yearly Change
Total Nonfarm	167,300	0.1%	2.0%
Mining, Logging and Construction	20,200	-2.9%	-0.5%
Manufacturing	22,400	0.9%	5.2%
Trade, Transportation, and Utilities	31,900	1.3%	-0.3%
Information	1,000	0.0%	-9.1%
Financial Activities	5,800	0.0%	1.8%
Professional and Business Services	14,400	0.7%	-0.7%
Education and Health Services	21,600	0.9%	1.9%
Leisure and Hospitality	17,200	1.2%	6.8%
Other Services	7,100	-5.3%	6.0%
Government	25,700	0.4%	2.4%

### Employment by Industry (March 2019)

