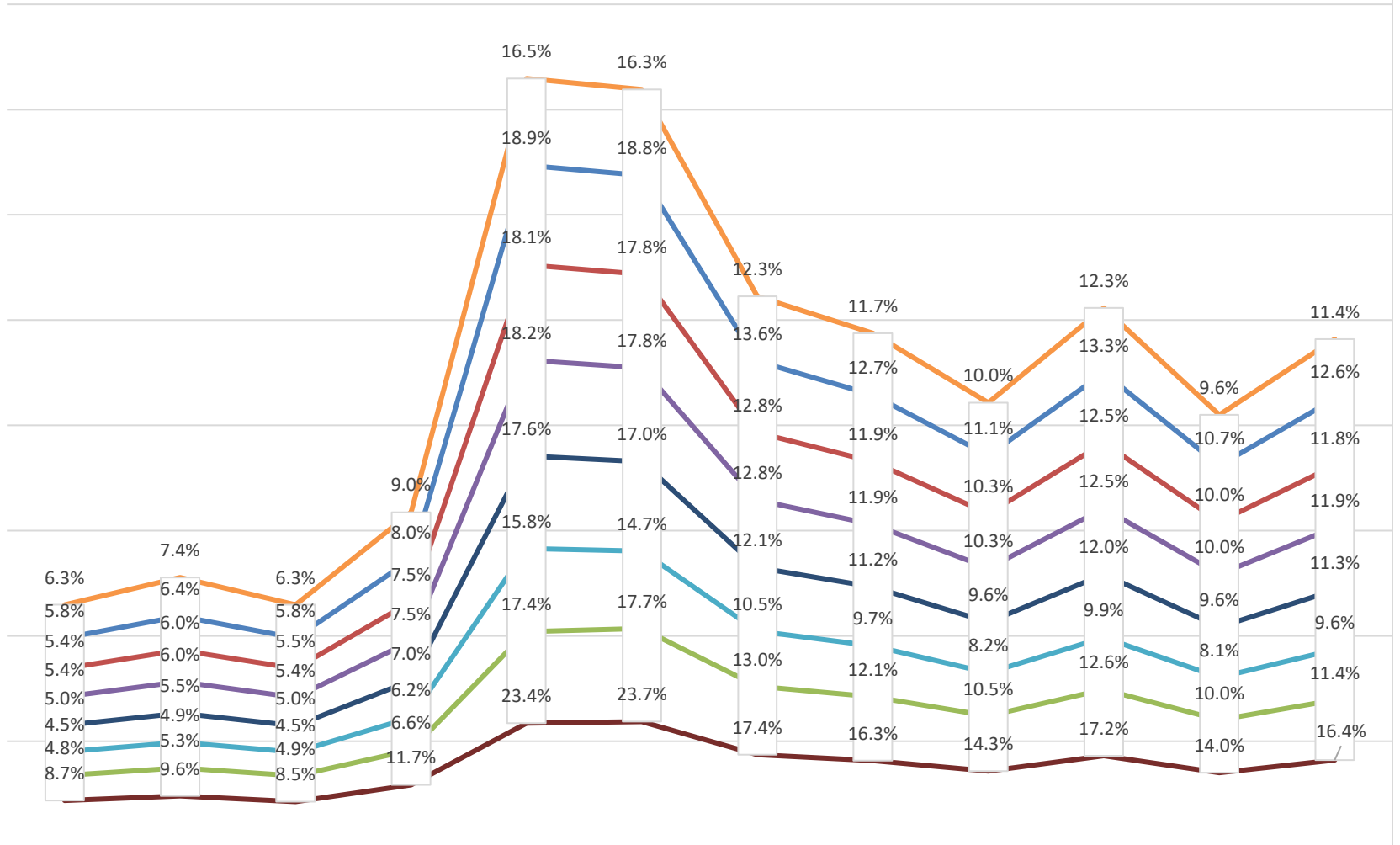


Southeast Texas Historical Unemployment Trends Latest 12 Monthly Trend



	Dec-19	Jan-20	Feb-20	Mar-20	Apr-20	May-20	Jun-20	Jul-20	Aug-20	Sep-20	Oct-20	Nov-20
Newton County	6.3%	7.4%	6.3%	9.0%	16.5%	16.3%	12.3%	11.7%	10.0%	12.3%	9.6%	11.4%
Jefferson County	5.8%	6.4%	5.8%	8.0%	18.9%	18.8%	13.6%	12.7%	11.1%	13.3%	10.7%	12.6%
Beaumont-Port Arthur MSA	5.4%	6.0%	5.5%	7.5%	18.1%	17.8%	12.8%	11.9%	10.3%	12.5%	10.0%	11.8%
South East Texas WDA	5.4%	6.0%	5.4%	7.5%	18.2%	17.8%	12.8%	11.9%	10.3%	12.5%	10.0%	11.9%
Orange County	5.0%	5.5%	5.0%	7.0%	17.6%	17.0%	12.1%	11.2%	9.6%	12.0%	9.6%	11.3%
Hardin County	4.5%	4.9%	4.5%	6.2%	15.8%	14.7%	10.5%	9.7%	8.2%	9.9%	8.1%	9.6%
Beaumont City	4.8%	5.3%	4.9%	6.6%	17.4%	17.7%	13.0%	12.1%	10.5%	12.6%	10.0%	11.4%
Port Arthur City	8.7%	9.6%	8.5%	11.7%	23.4%	23.7%	17.4%	16.3%	14.3%	17.2%	14.0%	16.4%