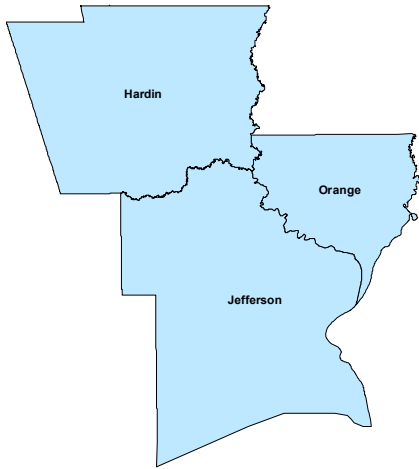


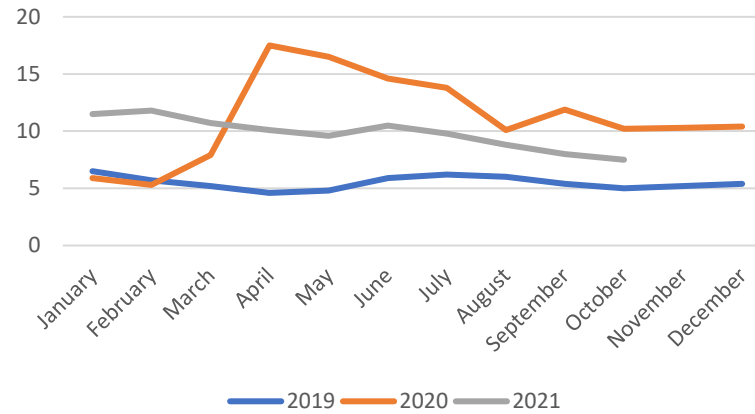
7.5%
Unemployment Rate
October 2021
Down 0.5 percent from
September

34,830
Unemployment Insurance Claims
October 1, 2020 – October 31, 2021

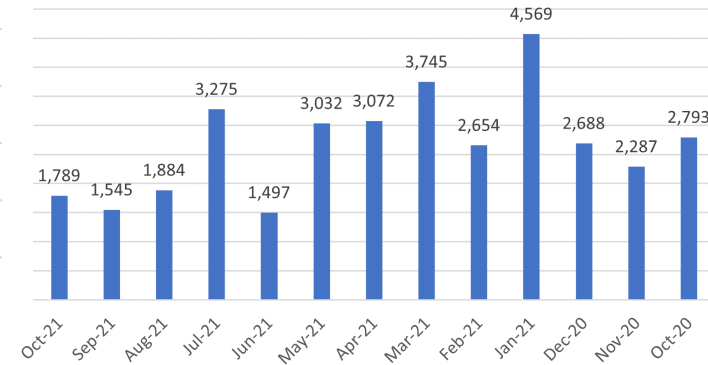
Economic Snapshot of Southeast Texas



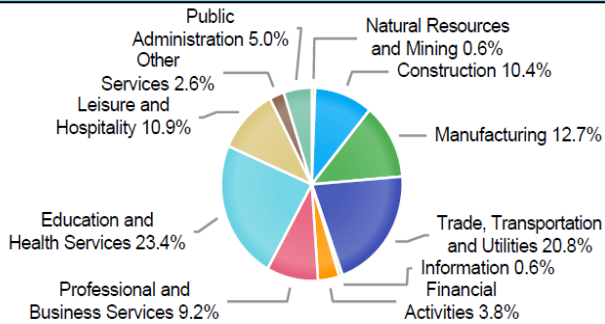
Southeast Texas Unemployment Rate



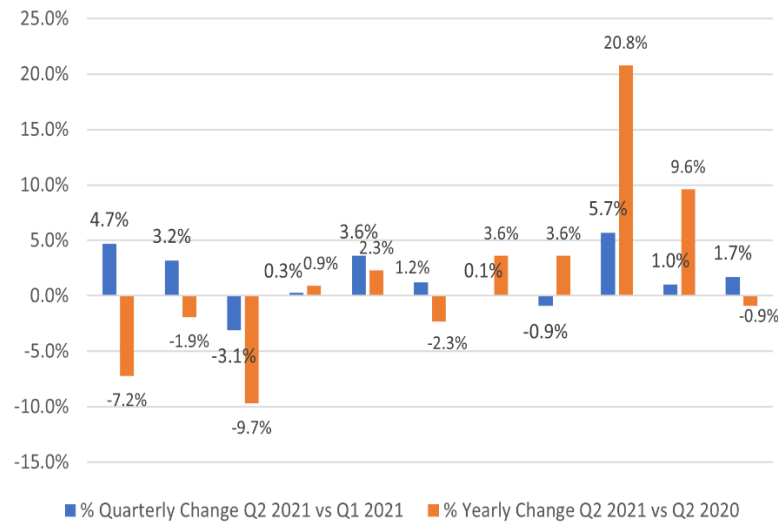
UI Claimants by Month



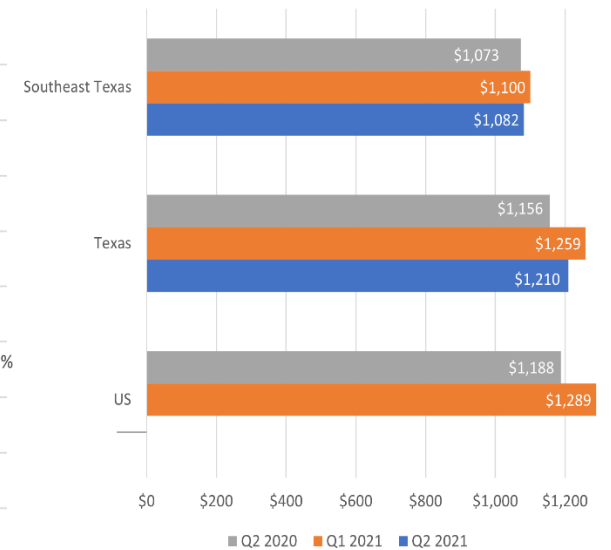
Employment by Industry (2nd Quarter 2021)



Percent Change in Employment by Industry



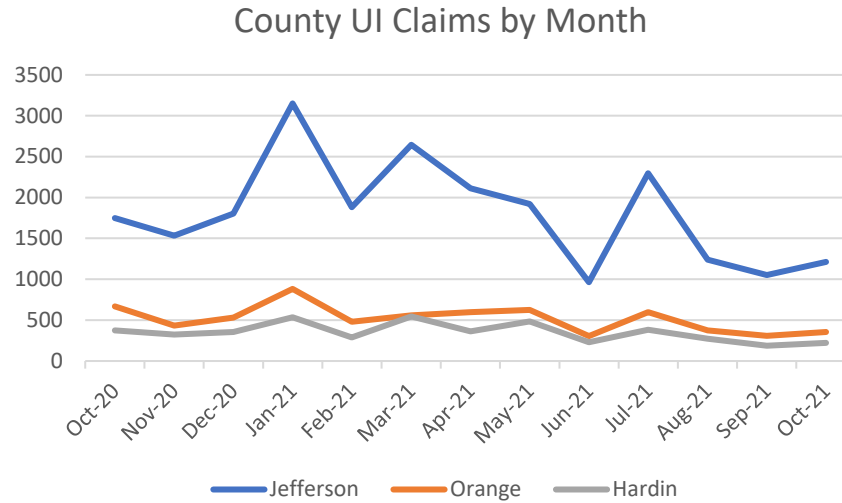
Average Weekly Wage



Source: Texas Labor Market Information, <https://texaslmi.com/>
U.S. Bureau of Labor Statistics, QCEW, <https://data.bls.gov/>



Unemployment Insurance Claims Snapshot
Oct. 1, 2020 – Oct. 31, 2021



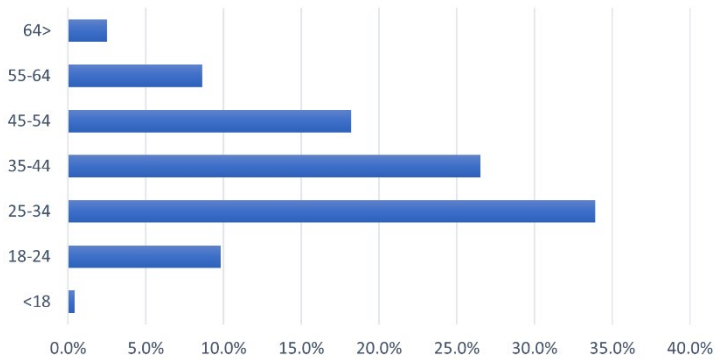
34,830
Unemployment Insurance Claims
Oct. 1, 2020 – Oct. 31, 2021

UI Claims by County

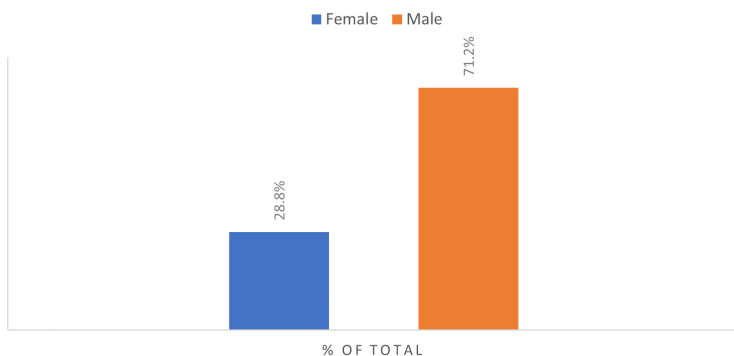
Jefferson	23,557
Orange	6,713
Hardin	4,560

Unemployment Insurance Claims Snapshot
Filing week: November 14, 2021

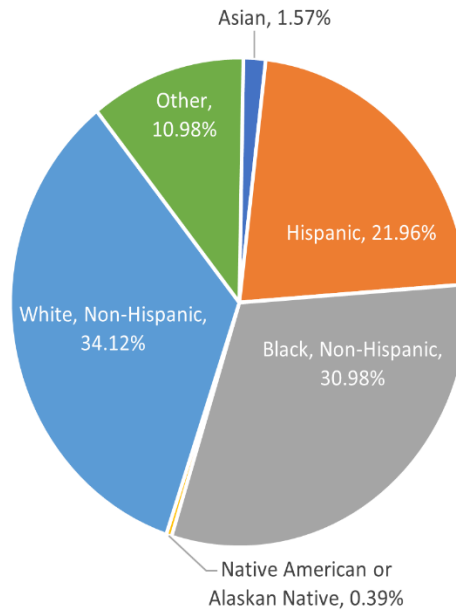
Age Group of Distinct Active Claimants



GENDER OF DISTINCT ACTIVE CLAIMANTS



Race of Distinct Active Claimants



Source: Texas Workforce Commission

Education of Distinct Active Claimants

- No or some school
- HS Graduate or GED
- Some College No Degree
- Associate's Degree
- Bachelor's Degree
- Master's Degree

