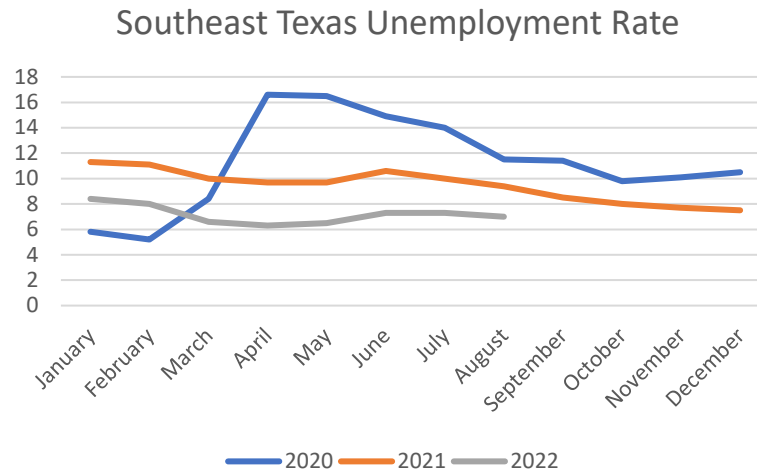


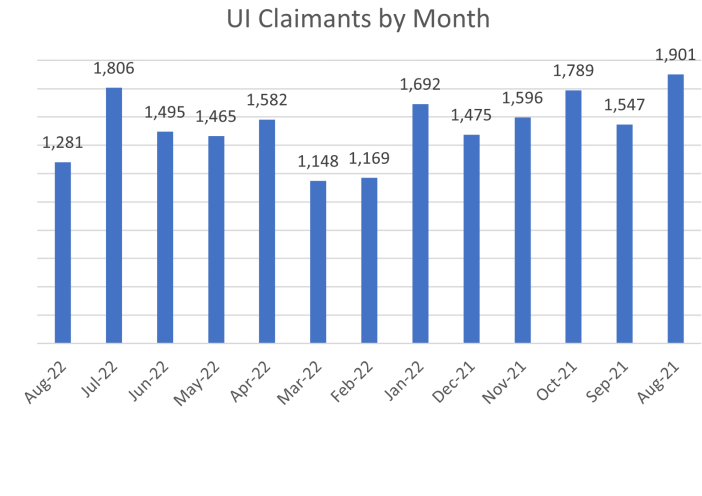


Economic Snapshot of Southeast Texas

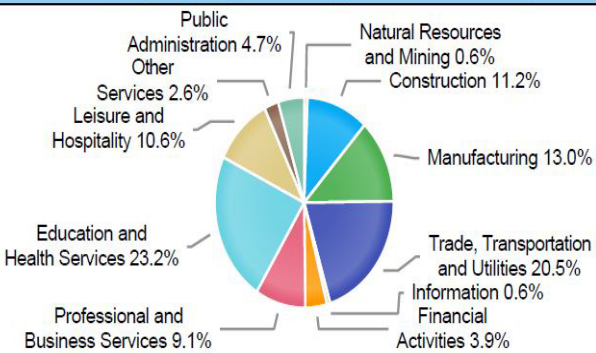
7.0%
Unemployment Rate
August 2022
Down .3 percent from July



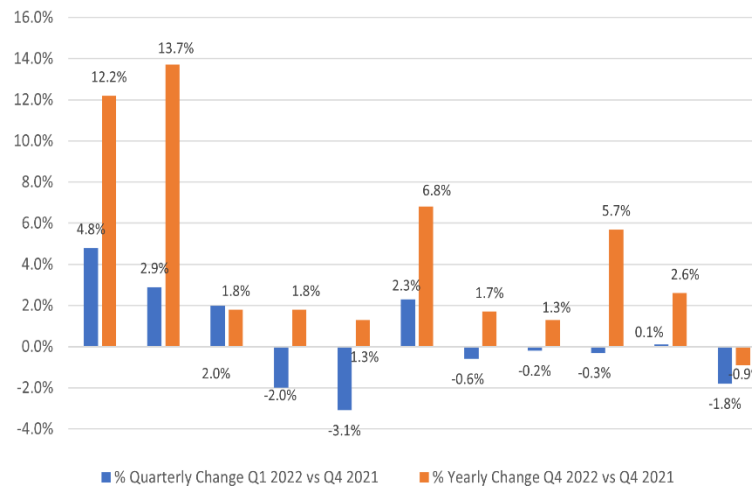
19,946
Unemployment Insurance Claims
August 1, 2021 – August 31, 2022



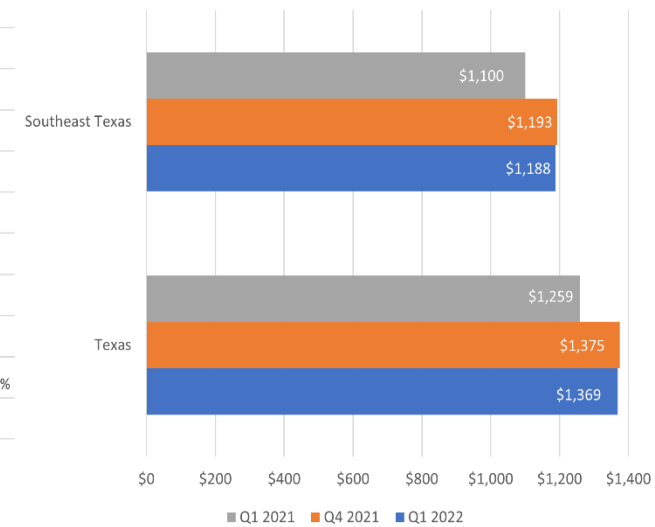
Employment by Industry (1st Quarter 2022)



Percent Change in Employment by Industry



Average Weekly Wage



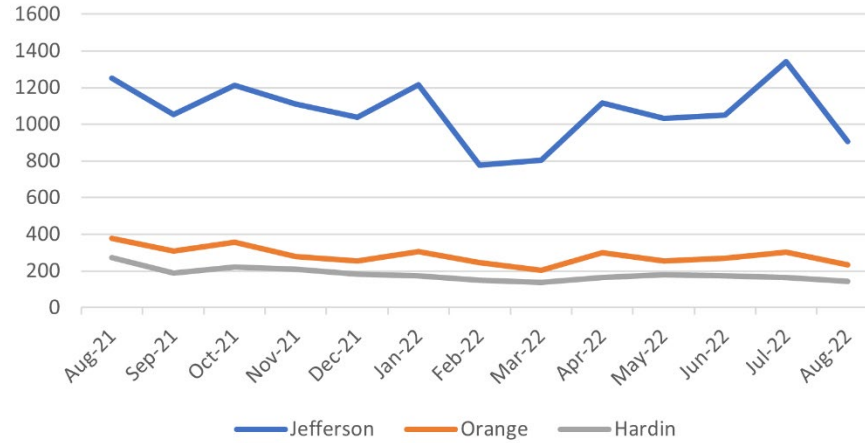
Source: Texas Labor Market Information, <https://texaslmi.com/>

U.S. Bureau of Labor Statistics, QCEW, <https://data.bls.gov/>



Unemployment Insurance Claims Snapshot
August 1, 2021 – August 31, 2022

County UI Claims by Month



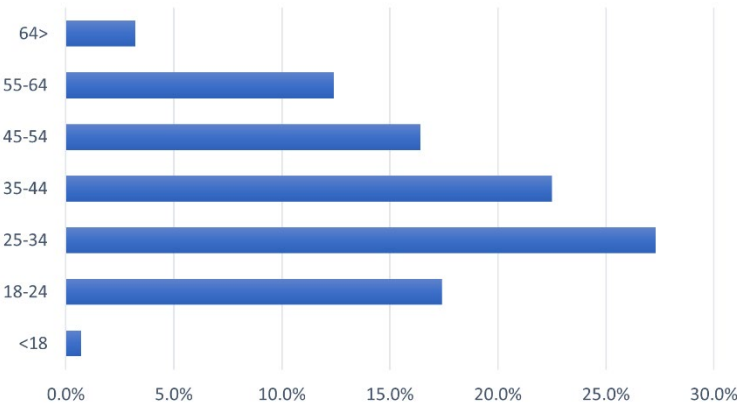
19,946
Unemployment Insurance Claims
August 1, 2021 – August 31, 2022

UI Claims by County

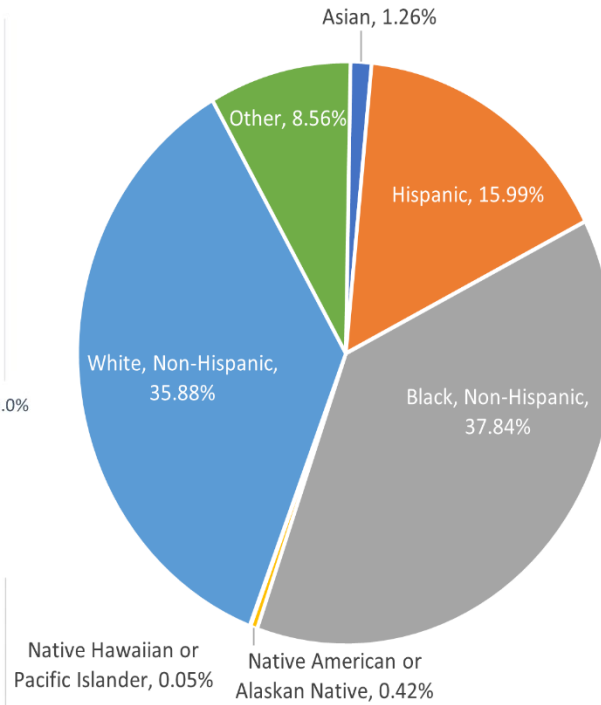
Jefferson	13,904
Orange	3,681
Hardin	2,361

Unemployment Insurance Claims Snapshot

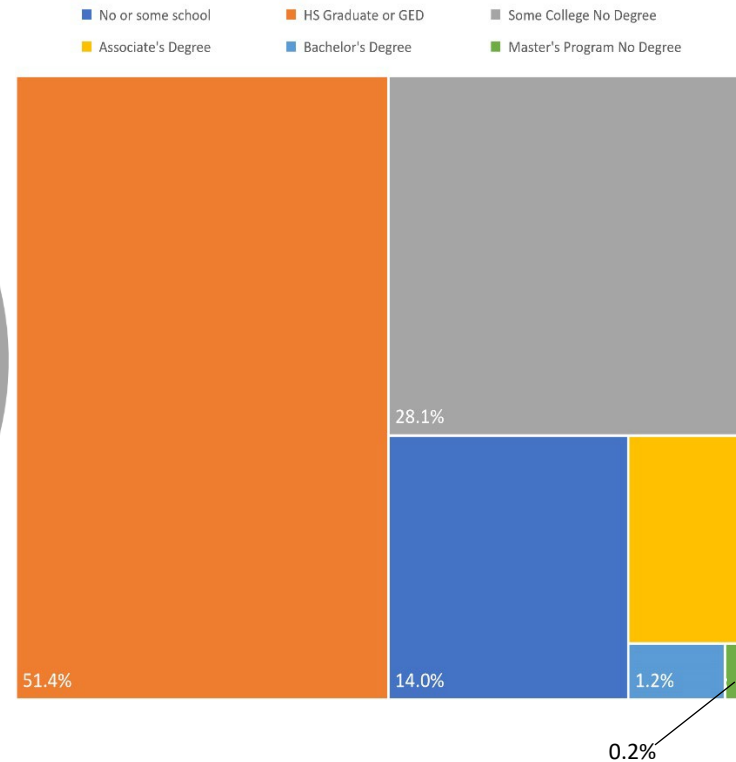
Age Group of Distinct Active Claimants



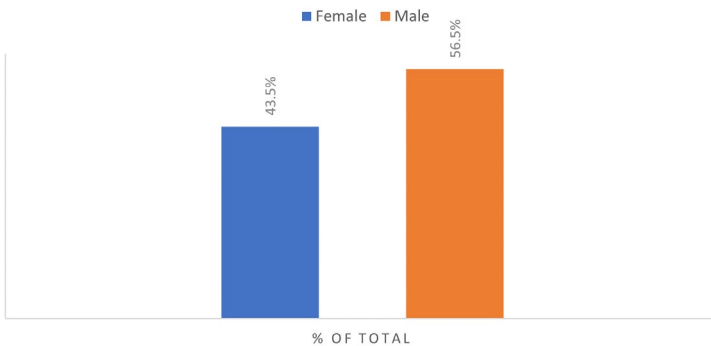
Race of Distinct Active Claimants



Education of Distinct Active Claimants



GENDER OF DISTINCT ACTIVE CLAIMANTS



Source: Texas Workforce Commission