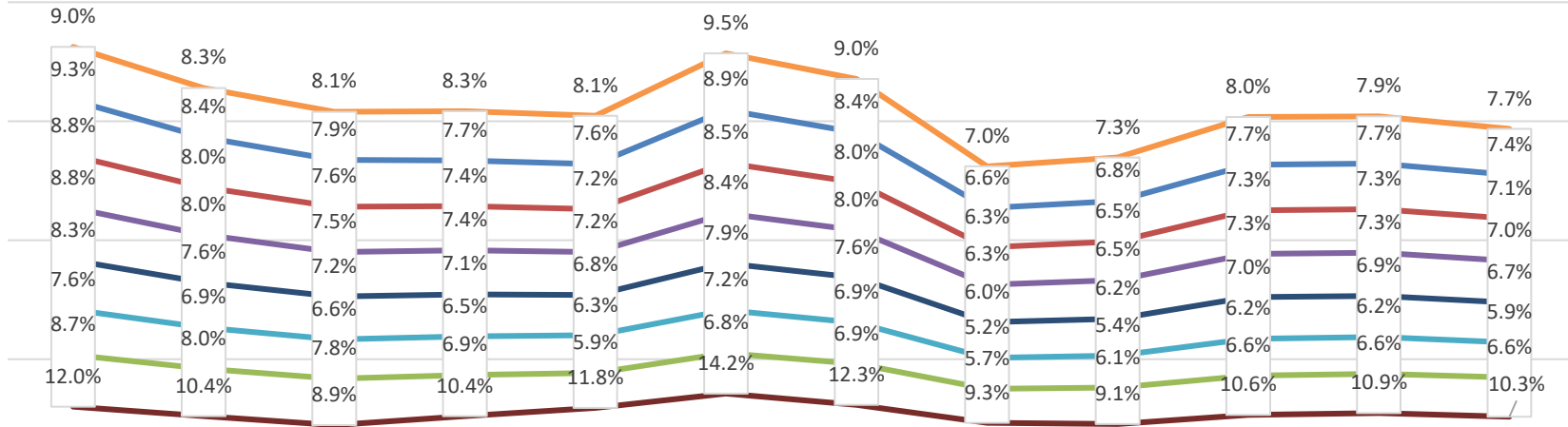


Southeast Texas Historical Unemployment Trends Latest 12 Monthly Trend



	Sep-21	Oct-21	Nov-21	Dec-21	Jan-22	Feb-22	Mar-22	Apr-22	May-22	Jun-22	Jul-22	Aug-22
Newton County	9.0%	8.3%	8.1%	8.3%	8.1%	9.5%	9.0%	7.0%	7.3%	8.0%	7.9%	7.7%
Jefferson County	9.3%	8.4%	7.9%	7.7%	7.6%	8.9%	8.4%	6.6%	6.8%	7.7%	7.7%	7.4%
Beaumont-Port Arthur MSA	8.8%	8.0%	7.6%	7.4%	7.2%	8.5%	8.0%	6.3%	6.5%	7.3%	7.3%	7.1%
South East Texas WDA	8.8%	8.0%	7.5%	7.4%	7.2%	8.4%	8.0%	6.3%	6.5%	7.3%	7.3%	7.0%
Orange County	8.3%	7.6%	7.2%	7.1%	6.8%	7.9%	7.6%	6.0%	6.2%	7.0%	6.9%	6.7%
Hardin County	7.6%	6.9%	6.6%	6.5%	6.3%	7.2%	6.9%	5.2%	5.4%	6.2%	6.2%	5.9%
Beaumont City	8.7%	8.0%	7.8%	6.9%	5.9%	6.8%	6.9%	5.7%	6.1%	6.6%	6.6%	6.6%
Port Arthur City	12.0%	10.4%	8.9%	10.4%	11.8%	14.2%	12.3%	9.3%	9.1%	10.6%	10.9%	10.3%