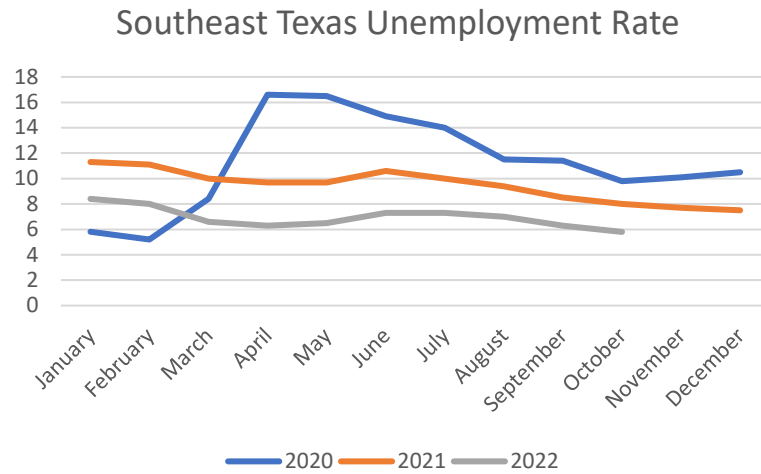
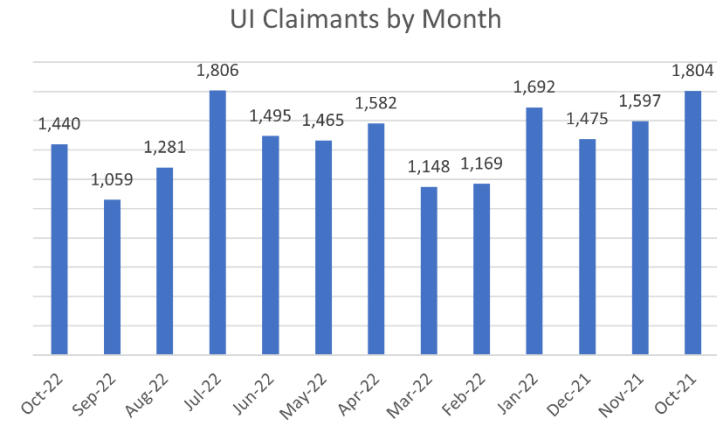


Economic Snapshot of Southeast Texas

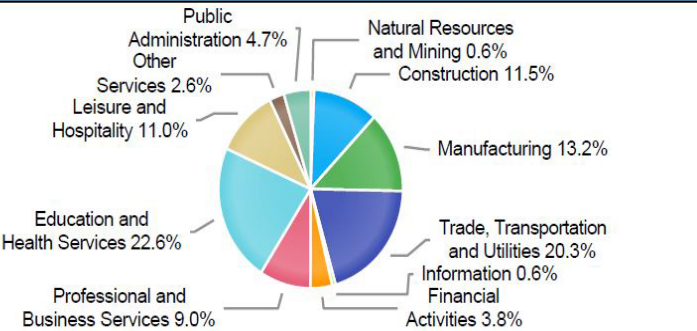
5.8%
Unemployment Rate
October 2022
Down 0.5 percent from September



19,013
Unemployment Insurance Claims
October 1, 2021 – October 31, 2022



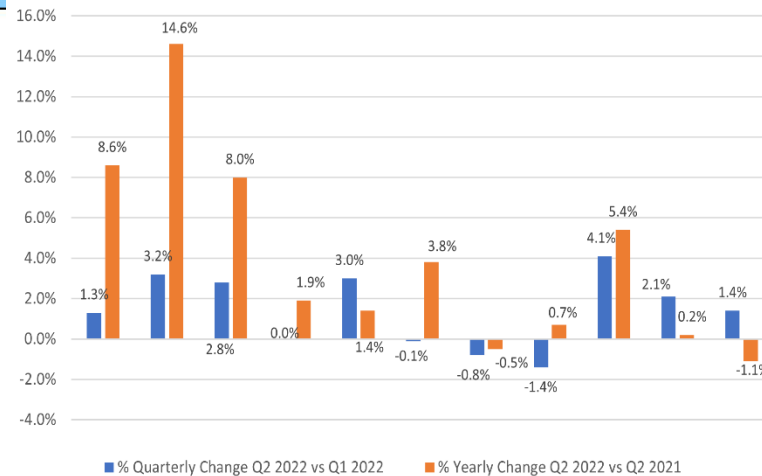
Employment by Industry (2nd Quarter 2022)



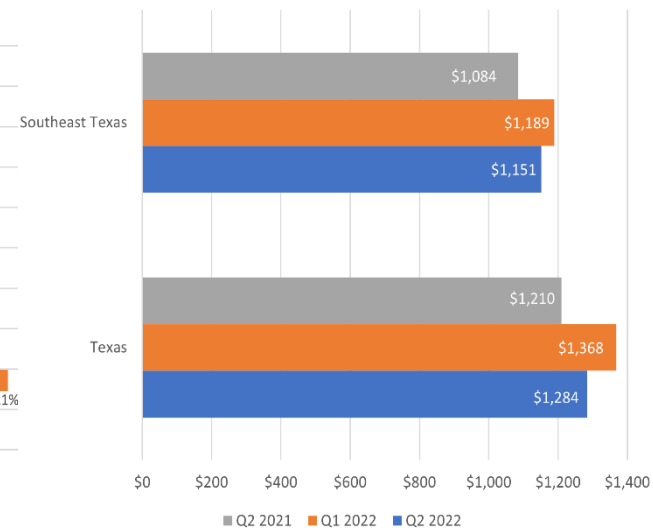
Source: Texas Labor Market Information, <https://texaslmi.com/>

U.S. Bureau of Labor Statistics, QCEW, <https://data.bls.gov/>

Percent Change in Employment by Industry



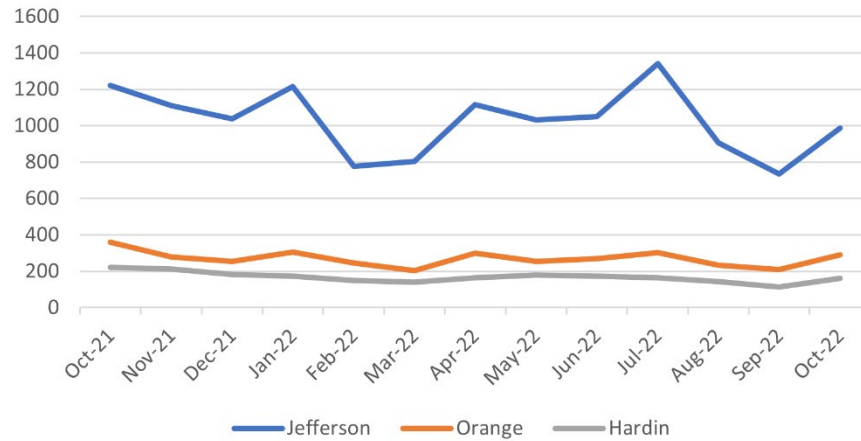
Average Weekly Wage





Unemployment Insurance Claims Snapshot
October 1, 2021 – October 31, 2022

County UI Claims by Month



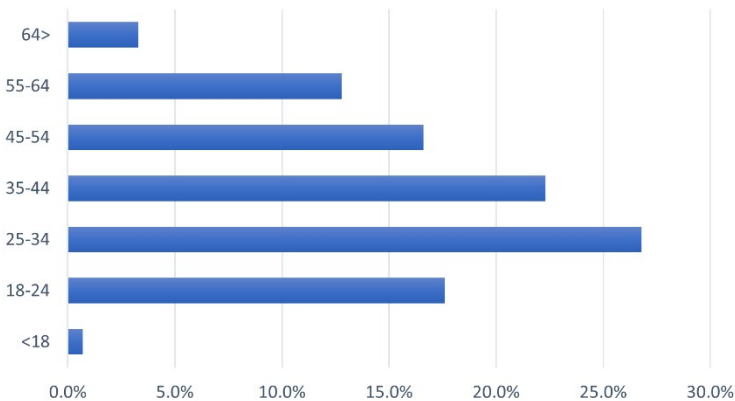
19,013
Unemployment Insurance Claims
October 1, 2021 – October 31, 2022

UI Claims by County

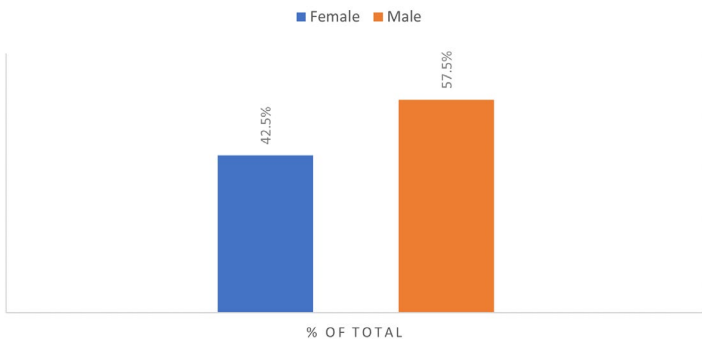
Jefferson	13,334
Orange	3,501
Hardin	2,178

Unemployment Insurance Claims Snapshot

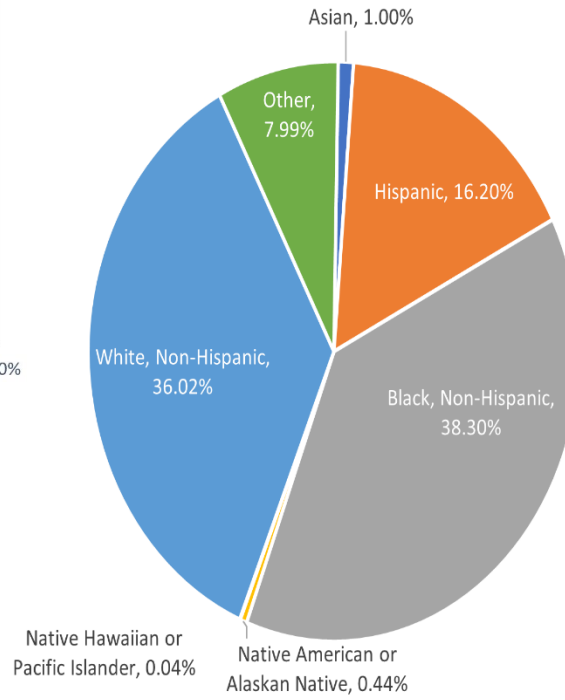
Age Group of Distinct Active Claimants



GENDER OF DISTINCT ACTIVE CLAIMANTS



Race of Distinct Active Claimants



Source: Texas Workforce Commission

Education of Distinct Active Claimants

